



# The Benefits of a Sustainable Urban Mobility Plans

Mike Jordanou,  
WSP  
Director - International



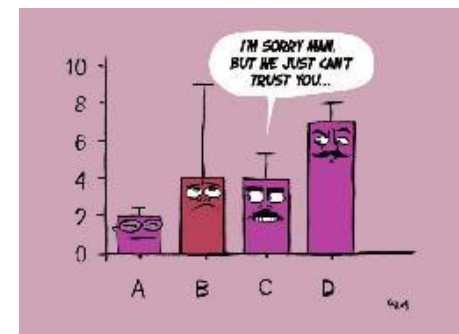
5th Cyprus Sustainable  
Mobility and Intelligent  
Transport Conference



15th May 2017

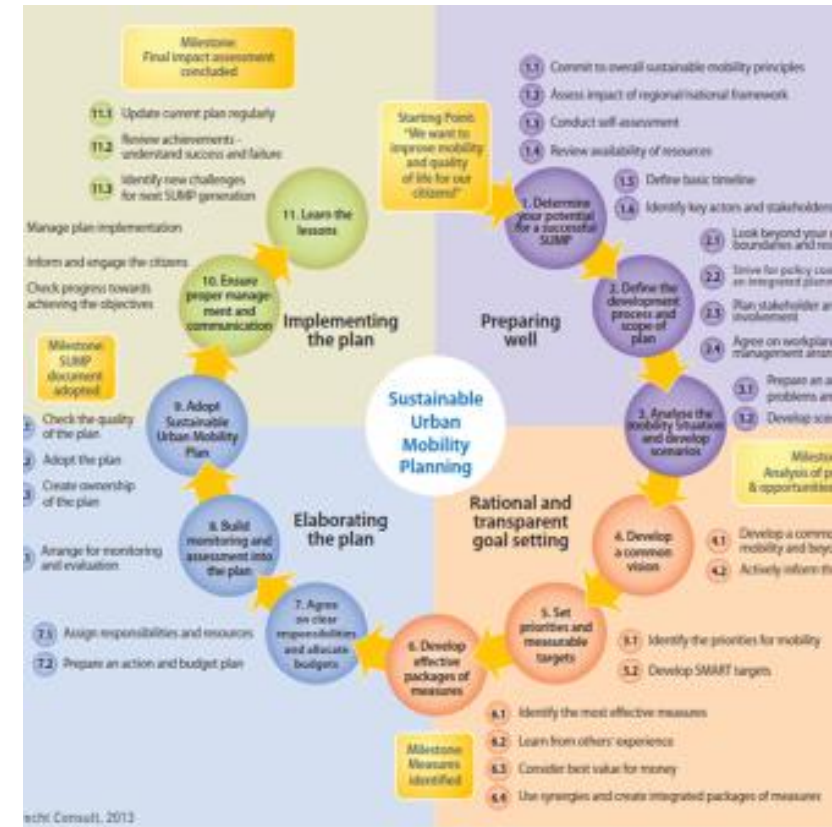
# Issues with traditional transport planning

- Organisational divide affects transport planning
- Planning restricted within administrative boundaries
- Uncertainty about data and impacts
- Lack of public acceptance hampers implementation
- We all have a view on transport!
- If we “do nothing”?



# What is a SUMP?

- A Sustainable and Integrated Urban Mobility Plan
- **Complex urban mobility issues** has been widely recognised.
- Key aspects:
  - **Long-term vision** and clear implementation plan
  - Assessment of current and future **performance**
  - Balanced and **integrated development** of all modes
  - Horizontal and vertical **integration**
  - **Participatory** approach



## So what are we planning for?



“If you plan cities for cars and traffic, you get cars and traffic. If you plan for people and places, you get people and places.”

*.....Planning for people*

## Why do our EU cities need SUMPS?

- Cities are home to over 70 % of the EU population
- Account for some 85 % of the EU's GDP
- Some 23% of all CO2 emissions from transport
- Majority of Europeans believe that air pollution (81%), road congestion (76%), travelling costs (74%), accidents (73%) and noise pollution (72%) are serious problems within cities
- 24% of Europeans believe urban traffic situation will improve in the future
- 72% believe it will stay the same or get worse
- Only a 1/3<sup>rd</sup> use public transport at least once a week



## Why do our Cypriot cities need SUMPS?

- 2013: 475,000 passenger cars
- 2013: Motorisation Rate - 553 Pass Cars / 1000 pop
- 2013: European average of 471 cars/1,000 pop  
Cyprus - 6th highest in the EU
- 2013: 8th highest CO2 emissions
- 2000 - 2.6 people per pass vehicle
- 2013 - 1.8 people per pass vehicle
- One of the lowest PT mode shares in Europe
- 52% of energy consumption from Transport



## Some Fundamental Principles and Benefits...

- It's a Mobility Management and Mobility planning processes
- Focus on **people - not traffic**
- Its **accessibility/quality of life** - not road capacity
- It's a set of **integrated policies/actions** - not infrastructure focus
- Its **integrated planning** - not sectoral planning
- Its about **short/medium actions** embedded in a **long term plan** -not short term fixes or ad hoc responses
- Its **integrated planning** - not only a playground for traffic engineers and traffic modellers
- Its an **open workshop** not a closed "expert" forum
- Its about **measuring impacts** and not looking at short term gain.



## What are the Benefits?.....

- Limited amount of funding available. How best to use this investment efficiently to address urban mobility issues
- Evidence shows:
  - Pedestrian Schemes
  - Parking management and park and ride
  - Travel plans
  - Public transport (BRT, LRT guided buses)
  - Traffic management
  - Cycling and walking
- Removes doubts & demonstrates over-whelming evidence that SUM investment is good for the economy





## What are the Benefits?.....

- Town centres with **low traffic**, but **high PT, Walking & Cycling** more vigorous, pleasant and profitable
- Integrated, consistent packages of **sustainable measures** - better **economic performance**
- Combine traffic reduction and investment such as **behavioural change** programmes
- Cities which invest in Sustainable Mobility solutions dedicate **less of their resources** to transport



## What are the Benefits?.....

- Quality of **life** & **attractive** city centre
- Creates **Economic Benefits**
- Better **Health** and **Environment**
- **Seamless** Mobility
- Maximises resources
- **Winning public support**
- Prepares **better plans**
- Legal obligations met on **air and noise quality**
- Cuts across **boundaries**
- New **Culture**



## Its an Opportunity.....

- This an opportunity to:
  - get **involved**...
  - have a **voice**...
  - **influence** the planning of your city
- Key Aspects for Cities in Cyprus:
  - The policy and strategy must be **sustainable**
  - Promote the **uniqueness** of Cypriot Cities
  - Capitalise on its **history, its culture and its people**
  - **Do not** bury it under traffic!
- Challenges...
  - There is a need for a **cultural shift**!
  - Increase **public transport** mode share
  - Increase **cycle mode** share
  - Create **walkable cities**
  - Increase **public space areas**



16 May 2017

Thank you....

wsp