

ECPPM 2016 | Sep 7th – Sep 9th, 2016 | Limassol, Cyprus
eWork and eBusiness in Architecture, Engineering and Construction
11th European Conference on Product and Process Modelling

www.cyprusconferences.org/ecppm2016

Call for Papers

Steering Committee:

Chairperson

R.J. Scherer, Technische Universität Dresden, Germany

Vice Chairpersons

Z. Turk, University of Ljubljana, Slovenia
S.E. Christodoulou, University of Cyprus, Cyprus
A. Mahdavi, Vienna University of Technology, Austria

International Scientific Committee:

R. Amor, University of Auckland, New Zealand
C. Anumba, Pennsylvania State University, USA
E. Arlati, Politecnico di Milano, Italy
G. Augenbroe, Georgia Institute of Technology, USA
H. Bell, Catenda, Norway
M. Bohms, TNO, The Netherlands
A. Borrmann, Technische Universität München, Germany
T. Cerovsek, University of Ljubljana, Slovenia
J. Cervenka, Cervenka Consulting, Czech Republic
E. Dado, Nederlandse Defensie Academie, The Netherlands
N.N. Dawood, Centre for Construction Innovation and Research, University of Teesside, UK
A. Dikbas, Istanbul Technical University, Turkey
R. Drogemuller, Queensland Univ. of Technology UT CSIRO, Australia
B. Fies, CSTB, France
C. Finne, Building Information Foundation, Finland
M. Fischer, Center for Integrated Facility Engineering, Stanford University, USA
T. Froese, University of British Columbia, Canada
G. Gudnason, Innovation Centre, Iceland
T. Hassan, Loughborough University, UK
E. Hjelseth, Digitale UMB, Norway
W. Huhnt, Technische Universität Berlin, Germany
R. Jardim-Goncalves, Universidade Nova de Lisboa, Portugal
P. Katranuschkov, Technische Universität Dresden, Germany
A.S. (Sami) Kazi, VTT Technical Research Centre of Finland, Finland
A. Kiviniemi, University of Liverpool, UK
B. Martens, Vienna University of Technology, Austria
K. Menzel, University College Cork, Ireland
S. Munoz, AIDICO, Instituto Tecnológico de la Construcción, Spain
S. Radeva, College of Telecommunications and Post - Sofia, Bulgaria
I. Redondo, TECNALIA, ICT Div., European Software Institute, Spain
Y. Rezgui, Cardiff University, UK
U. Rueppel, Technical University of Darmstadt, Germany
V. Semenov, Institute for System Programming RAS, Russia
M.J. Skibniewski, University of Maryland, USA
I. Smith, EPFL - Ecole Polytechnique Fédérale de Lausanne, Switzerland
R. Steinmann, Institute for Applied Building Informatics, University of Munich, Germany
V. Tarandi, KTH - Royal Institute of Technology, Sweden
W. Tizani, University of Nottingham, UK
H. Yaman, Istanbul Technical University, Turkey
P.N. Méda Magalhães, Porto University, Portugal

Local Organizing Committee:

S.E. Christodoulou, University of Cyprus, Cyprus (Chair)
L. Dimitriou, University of Cyprus, Cyprus
O. Kontovourkis, University of Cyprus, Cyprus
A. Agathokleous, University of Cyprus, Cyprus

Aim and Scope

In the last two decades, the biannual ECPPM (European Conference on Product and Process Modelling) conference series, as the oldest BIM conference, has provided a unique platform for the presentation and discussion of the most recent advances with regard to the ICT (Information and Communication Technology) applications in the AEC/FM (Architecture, Engineering, Construction and Facilities Management) domains. **ECPPM2016** is the **11th European Conference on Product & Process Modeling**, the flagship conference event of the European Association of Product and Process Modeling (EAPPM), with a long standing history of excellence in product and process modeling in building industry, which is currently known as building information modeling (BIM). ECPPM2016 covers complementary thematic areas that hold great promise for the advancement of research and technological development in the modelling of complex engineering systems. In this context, ECPPM2016 foresees to attract high quality research papers and to provide a platform for the cross fertilization of new ideas and know-how in relation to the special conference themes.

Conference Themes

- Information and Knowledge Management
- Description Logics and Ontology Application in AEC
- 5D/nD Modelling, Simulation and Augmented Reality
- Standardization of Data Structures
- Multi-Model and distributed Data Management
- Industrialized Production, Smart Products and Services
- Sustainable Buildings and Urban Environments
- BIM Implementation and Deployment
- Building Performance Simulation
- Intelligent Catalogues and Services
- Construction Management
- Risk Management
- Infrastructure Condition Assessment
- Regulatory and Legal Aspects
- System Identification
- Interoperability
- Smart Cities
- Collaboration and Teamwork

Important Dates

- Abstract Submission **Jan. 15, 2016** Feb 15, 2016
- Proposals for Workshops or Special Sessions **Jan. 15, 2016** Feb 15, 2016
- Abstract Acceptance Notification **Jan. 30, 2016** Feb 28, 2016
- Paper Submission **Mar. 30, 2016** Apr 15, 2016
- Paper Notification **Apr. 30, 2016**
- Camera-Ready Paper Submission **May 30, 2016**

Organized By



Sponsored By





ECPPM 2016 | Sep 7th – Sep 9th, 2016 | Limassol, Cyprus
eWork and eBusiness in Architecture, Engineering and Construction
11th European Conference on Product and Process Modelling

www.cyprusconferences.org/ecppm2016

Call for Papers

Paper Submission

The submissions should contain original, high quality work, not submitted or published elsewhere. Abstracts (500 to 800 words; no figures) of proposed papers should be submitted as soon as possible but no later than the abstract submission date. Authors will be notified of acceptance by the Conference Editors. Final acceptance will be based upon review of the full-length paper which must be received before the corresponding conference deadline. Abstracts and full-length papers should be submitted electronically (through the ECPPM2016 web site) in MS-WORD (.doc/.docx) format and should conform to EAPPM specifications (double-column, 12-point Times New Roman font size, 13 point line spacing, 8 - 10 pages). Full instructions and MS-Word templates can be found at the ECPPM2016 website.

Paper Presentation

Each accepted paper should be presented by one of the authors and accompanied by at least one full registration fee payment, to guarantee publication in the proceedings. One full registration fee can cover up to 2 papers only. All accepted papers will be included in the conference proceedings of ECPPM2016, to be published by CRC Press.

Students Paper Competition

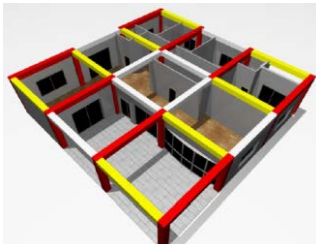
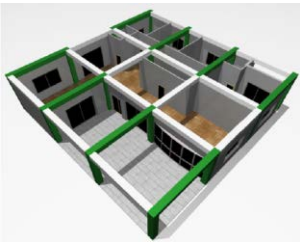
Students are encouraged to submit their papers to the ECPPM2016 Student Paper Competition (SPC).

Journal Special Issues

All accepted papers will be included in the proceedings of ECPPM2016 that will be published by EAPPM and CRC Press / Balkema.

Local Organization

EasyConferences Ltd., Cyprus



Venue

St. Raphael Resort ★★★★★

The St. Raphael Resort is located on one of the most renowned and largest beaches in Limassol, only a short coastal drive from the lively centre of town, approximately 10 minutes away. There are shops, restaurants and bars within walking distance and a bus stop exactly outside the hotel.



Use a QR code scanner to quickly visit the ECPPM2016 website on your mobile device

Contact

Academic Inquiries:

Dr. Symeon E. Christodoulou - schristo@ucy.ac.cy

Questions including Accommodation and Travel Arrangements:

Easy Conferences - info@easyconferences.eu

Social Media

Facebook:

<https://www.facebook.com/ECPPM-2016-555599721237374>

Twitter:

<https://twitter.com/EasyConference1>