

# From rare and endemic species to habitat mapping in Prespa NP, Albania

Theme: Collaborative Approaches to Enhance Knowledge and Conservation

Dr. Abdulla Diku  
ILIRIA organization

Search Google Maps



Sign in

Italy

Montenegro

Kosovo

Bulgaria

North Macedonia

Albania

Greece

Rome

Pescara

Mostar

Dubrovnik

Podgorica  
Подгорица

Niš  
Ниш

Sofia  
София

Plovdiv  
Пловдив

Burgas  
Бургас

Naples

Sorrento

Salerno

Bari

Matera

Taranto

Brindisi

Lecce

Gallipoli

Tiranë

Ohrid  
Охрид

Thessaloniki  
Θεσσαλονίκη

Edirne

Çanakkale

Corfu  
Κέρκυρα

Ioannina  
Ιωάννινα

Sarandë

Patras  
Πάτρα

Athens  
Αθήνα

Palermo

Messina

Ionian Sea

Google

Zakinthos

anis

r

kuşadas



Layers



Project title; “SRE-Assessment, protection and *in-situ/ex-situ* conservation, through the involvement of young professionals”, supported by CEPF & PONT

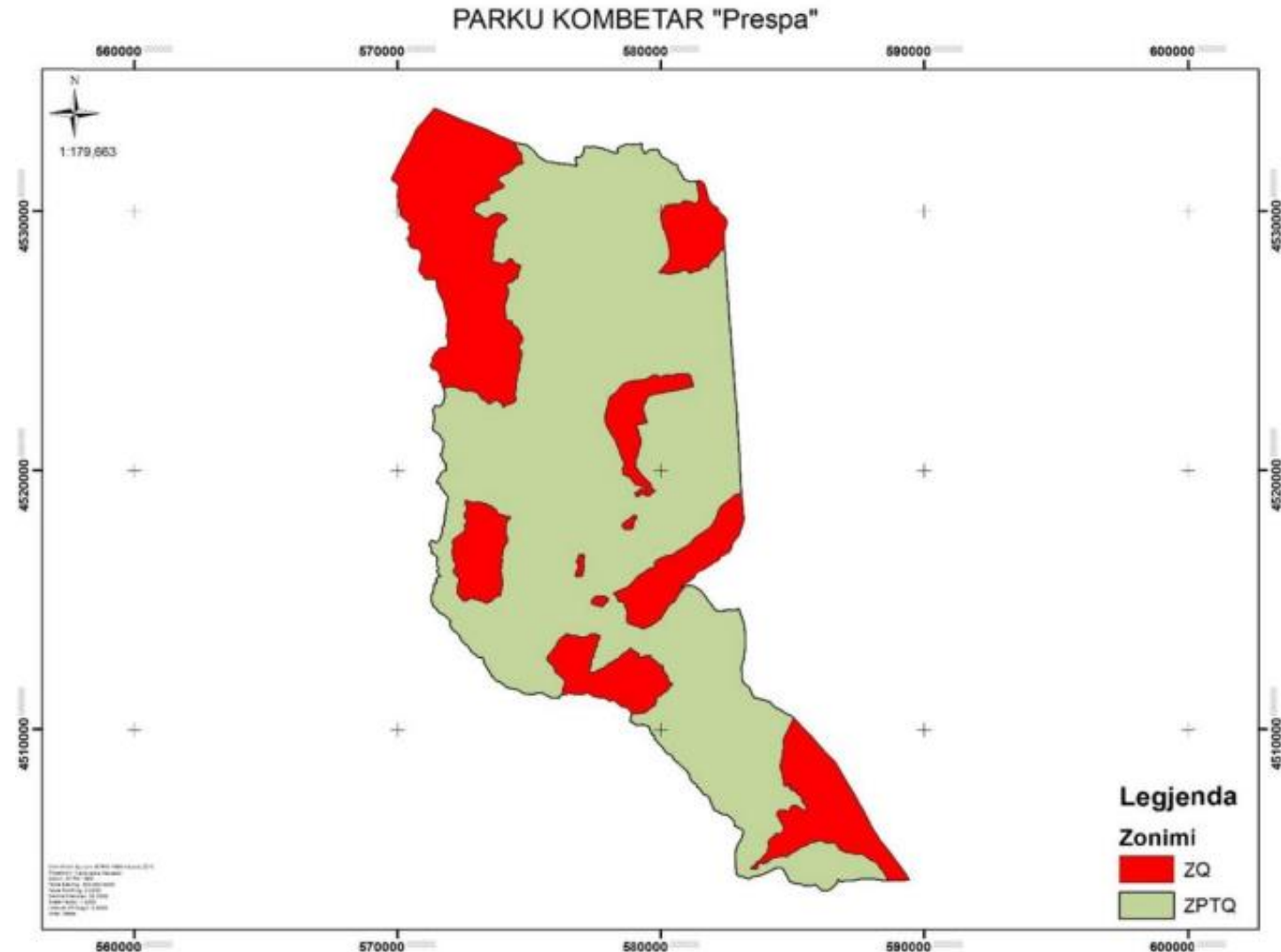
1. 15-plants of *C. pseudojankae* and 15-bulbs of *A. albanicum* and 10-plants of *Crocus cvijicii* and *Sempervivum ciliosum*, 150 seeds of *Centaurea soskae* and *C. shumkana* and *D. galicicae* were ***ex-situ* and *in-situ* cultivated** in the Botanical Garden of Tirana and the garden of Prespa NP.
2. A **list of recommendation** for improving management and conservation status of rare and endemic plant was delivered to the park administration
3. **Three young botanists and two officers** of Prespa NP also participate in the field expedition and were trained with a standard methodology for monitoring endemic species of the Park in the future
4. **16 master students** have been trained on-line aimed to learn the IUCN methodology of plant species assessment
5. **32 people** from the staff of RAPA (Korçë), students (young botanists) of Tirana, Vlora, and Korça Universities, staff of Maliqi, Bilishti, and Pogradeci municipalities, and volunteers of CSOs are also trained for using the manual on plant species monitoring.
6. **Ten documents** of species assessment or “passports” assessed for the IUCN Red List
7. The **global assessment for three species** (*Centaurea galicicae*, *Centurea soskae* and *Dianthus galicicae*) was drafted by ILIRIA staff and sent to the regional assessor officer of IUCN
8. **A book on rare and endemic species** for Prespa NP published
9. **Manual on Plant species** monitoring drafted and published
10. **Location of rare and endemic** species – mapped



# Prespa NP, Albania

Area: 27,613 ha.

- IBA
- Important Plant Areas
- European Green Belt
- World Network of Biosphere Reserves
- RAMSAR site
- EMERALD site
- Transboundary PA



# Location of rare and endemics species



# Why collaborative approaches to enhance knowledge and conservation ?

- ▶ Why is it important to work with shepherds and local communities?
- ▶ Because they have more contact with the plants, they have more history and more tradition behind them. They know where they are and their values
- ▶ **Because, if we want to protect a species, first people have to know about it. They cannot protect and love something they don't know**



# Grant by CEPF & PONT - Identification rare and endemic species and their mapping



# Consultant and shepherd...



Once upon a time there was a shepherd looking after his sheep on the side of a deserted road. Suddenly a brand-new Porsche screeches to a halt. The driver, a man dressed in an Armani suit, Cerutti shoes, Ray-Ban sunglasses, TAG-Heuer wrist-watch, and a Pierre Cardin tie, gets out and asks the shepherd: "If I can tell you how many sheep you have, will you give me one of them?"

The shepherd looks at the young man, and then looks at the large flock of grazing sheep and replies: "Okay."

The young man parks the car, connects his laptop to the mobile-fax, enters a NASA Webster, scans the ground using his GPS, opens a database and 60 Excel tables filled with logarithms and pivot tables, then prints out a 150-page report on his high-tech mini-printer. He turns to the shepherd and says, "You have exactly 1,586 sheep here."

The shepherd cheers, "That's correct, you can have your sheep." The young man makes his pick and puts it in the back of his Porsche. The shepherd looks at him and asks: "If I guess your profession, will you return my animal to me?"

The young man answers, "Yes, why not?" The shepherd says, "You are a consultant."

"How did you know?" asks the young man.

"Very simple," answers the shepherd. "First, you came here without being called. Second, you charged me a fee to tell me something I already knew, and third, you don't understand anything about my business... Now can I have my dog back?"



*Centaurea saskae* subsp. *albida* Kit Tan, Shuka & Wagenitz  
Kokoçeli i Soshkut, nënlloji Bardhosh



*Edraianthus horvatii* Lakusic, 1973  
Edraiantë e Horvatit



*Dianthus galiciae* Micevski, 1987  
Karafil i Galicisë



*Sempervivum ciliasum* Craib, 1914  
Burgull qerpikor



*Astragalus mayeri* Micevski, 1970  
Arithë e Majerit



*Chamaecytisus pseudojankae* Pifkó & Barina, 2016  
Kamecitisë e rreme e Jankës

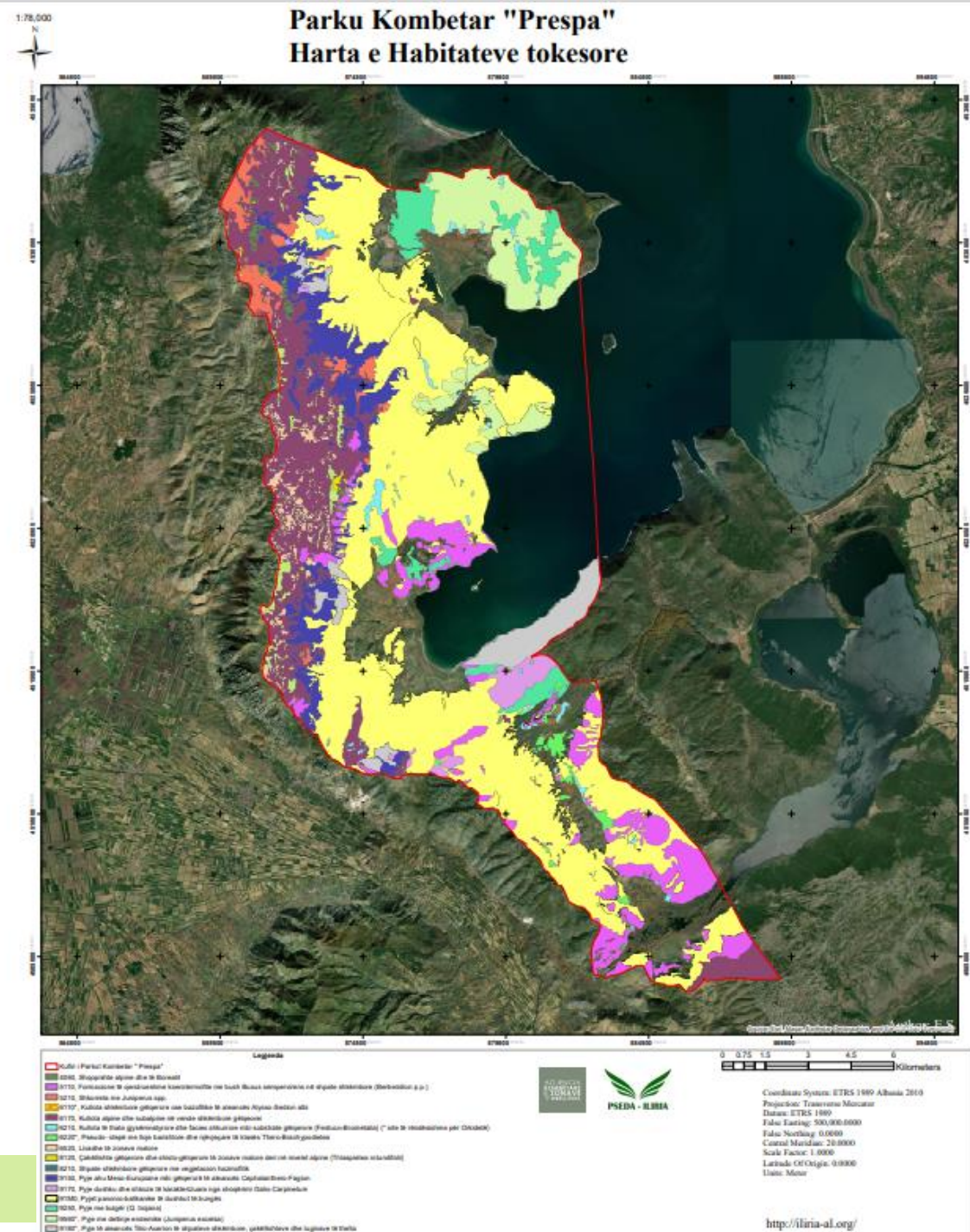


Table 4.2. Conservation degree for habitat types

Habitat Code	Name of Habitat Types	The conservation degree of Habitats	Nr. of relevés
6110	* Rupicolous calcareous or basophilic grasslands of the Alysso-Sedion albis	Favorable (FV)	7
6170	Alpine and subalpine calcareous grasslands	Favorable (FV)	10
6210	Semi-natural dry grasslands and scrubland facies on calcareous substrates (Festuco-Brometalia) (* important orchid sites)	Inadequate (U1)	7
6220	*Pseudosteppe with grasses and annuals Thero-Brachypodietea	Inadequate (U1)	6
6520	Mountain hay meadows	Favorable (FV)	6
8120	Calcareous and calcshist screes of the montane to alpine levels (Thlaspietea rotundifolii)	Bad (U2)	6
8210	Calcareous rocky slopes with chasmophytic vegetation	Inadequate (U1)	7

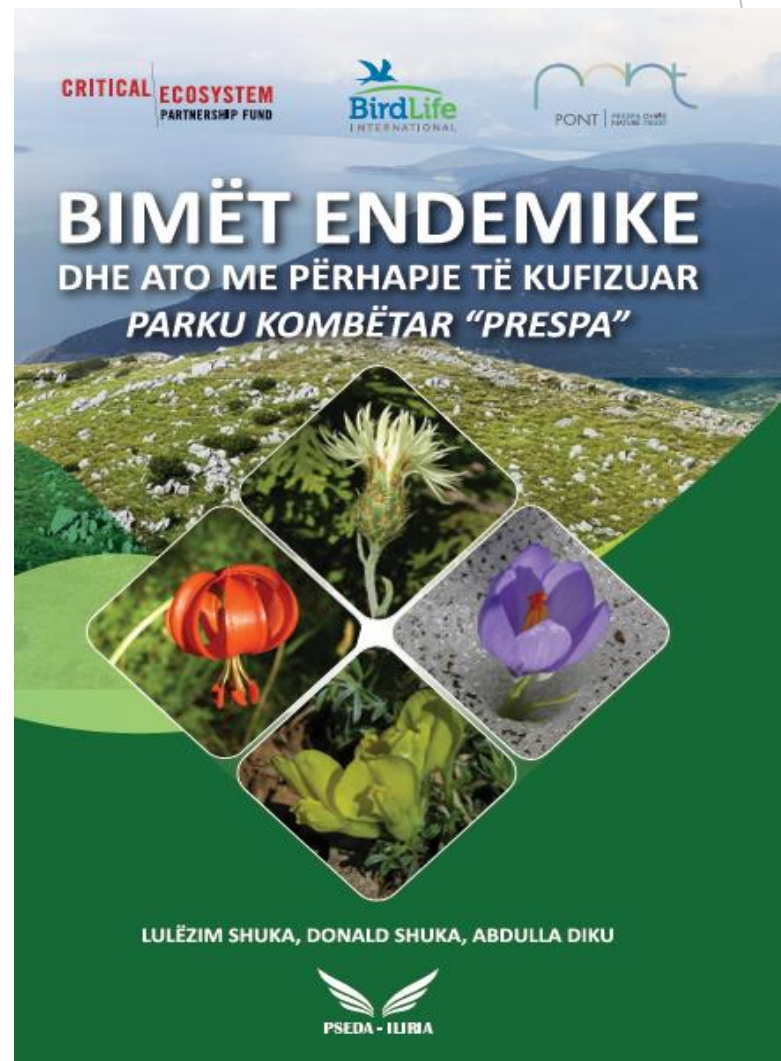
Habitat type	Area (ha)	Priority	Conservation
4060	24110	no	Favorable (FV)
5110	462	no	Bad (U2)
5210	1528	no	Favorable (FV)
9150	314	no	Inadequate (U1)
9170	738	no	Inadequate (U1)
9180	39454	yes	Inadequate (U1)
91M0	1140	no	Inadequate (U1)
9250	1338	no	Inadequate (U1)
9560	1201	yes	Favorable (FV)

Prespa NP is only park in Albania with a habitat map (N2000)



# National Agency of Protected Areas

- ▶ <https://akzm.gov.al/wp-content/uploads/2022/09/dokumente-1644840944778-1.pdf>





Not all of us can  
do great things.  
But we can do  
small things with  
great love.

MOTHER TERESA

Thank you!

[adiku@hotmail.com](mailto:adiku@hotmail.com)

[info@iliria-al.org](mailto:info@iliria-al.org)